

DESCRIPTION

The **1800 Cloud** is the latest innovation to Link4's Cloud technology. This is where the power of the Link4 iGrow1800 controller is combined with the flexibility of the Cloud for easy and convenient remote management. The iGrow 1800 is the supreme controller choice for indoor and greenhouse facilities requiring flexibility, security, and advanced control. It is now partnered with the 1800 Cloud, which will allow you to easily manage the enhanced features from your remote device.

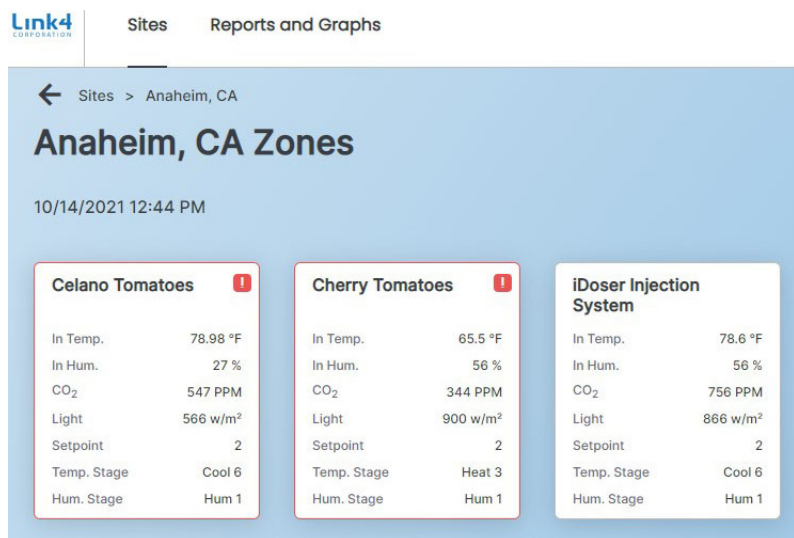
A new intuitive user interface makes it easy to manage multiple sites and zones from one location. Wanting additional remote access? Download our app for Android or iOS devices for greater remote accessibility. New user management features have been added to allow for greater flexibility and security. Add multiple users and assign them to specific controllers and specific zones with read/write security levels. Additional flexibility allows you to choose which controllers you want active on the cloud at one time.

The stored data on the Cloud allows you to report, graph or download the collected data for analysis. Use this information to improve growing techniques and duplicate successes.

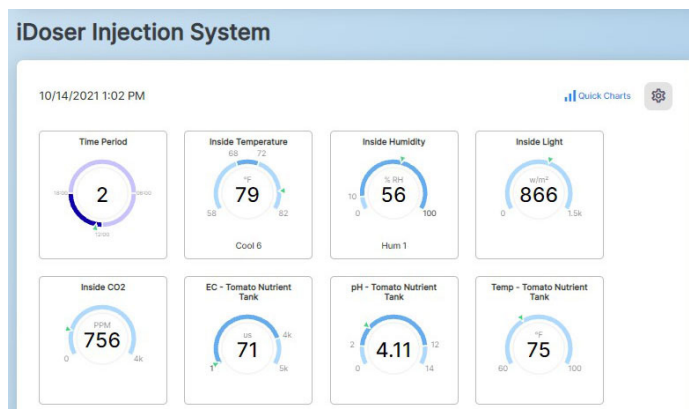
The 1800 Cloud also comes with built in alarm and notification features to provide you with the comfort of knowing that you will be notified (email / text / push notifications) when unusual conditions occur. These alarms are displayed on screen and logged for later review to identify reoccurring issues or modifications to your equipment or settings.

The newly added **Grow Journal** eliminates the need of paper and pen when logging grower notes. In addition, you can use the Grow Journal as a tool to give instructions to your staff, record equipment and facility notes and schedules, and store zone and crop specific guidelines and procedures. All of this critical information can be accessed at any time from your remote device where it will be stored with a date and time stamp. You can even set up custom categories for quick and easy organization, access and reporting on the information you have entered.

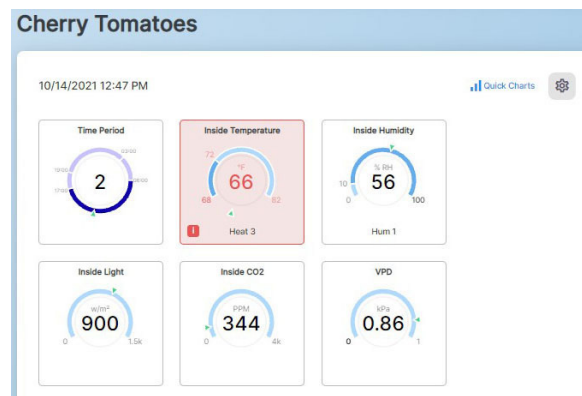
Enjoy the power of the iGrow1800 with the 1800 Cloud as it provides you increasingly greater flexibility and control of your valuable crops.



Multi-Site / Multi-Zone Dashboard Example



Zone Overview examples



FEATURES

- **AWS secure access and storage of data** ensuring your information is protected.
- **Multi-level user management security** enabling proper access control over your settings.
- **Multi-site and multi-zone monitoring control** for efficient managing of your operation.
- **Comprehensive integrated grow journal** providing easy organization, access, and printing of critical grower operational information and photos.
- **Advanced graphing and report generation** for analyzing data to replicate successes and make adjustments for increased ROI.
- **Mobile Android and iOS app** allowing greater remote accessibility.
- **Comprehensive audit log** enables the grower to track and document changes to your system.
- **Built-in advanced alarming** for greater sense of security and crop protection.

TECHNICAL REQUIREMENTS

- Internet connection.
- Internet ready mobile device
- Linkconn software

COMPATIBILITY

- iGrow 1800 Controller

Name	Status	Control
1. VentR	100%	[Stop]
3. Shade	0%	[Stop]
5. Heate	OFF	[Stop]
6. Fan	OFF	[Stop]
7. FillV	OFF	[Stop]
8. WWall	OFF	[Stop]
9. MixV	0%	[Stop]
11. HeatF	78%	[Stop]

Equipment Overview example

PHONE APP DISPLAYS

